

*Women's*



**COLLECTION**



# Women's Denim Baggy Pant



SOFT MATERIAL



STRETCH

STRETCH



BREATHABLE  
FABRIC

BREATHABLE  
FABRIC



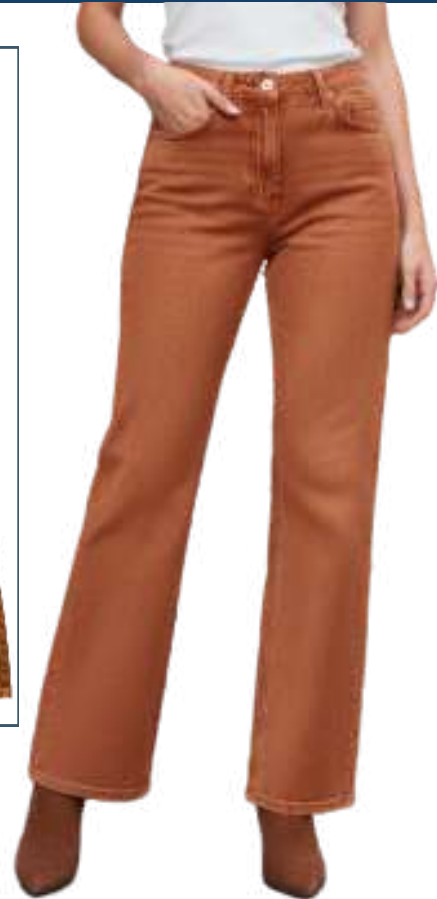
100% Cotton Denim

# Women's Denim Pant



**100% Cotton Denim**

# Women's Denim Pant



100% Cotton Denim

# Women's Denim Long Pant



**100% COTTON**  
**AW-12 OZ RFD**



**100% COTTON**  
**AW-11 OZ**



**100% COTTON**  
**AW-10 OZ**



**100% COTTON**  
**AW-10.5 OZ**



**100% COTTON**  
**TWILL- 190 GSM**

# Women's Denim Short



100% Cotton Denim

# Women's Denim Short & Skirt



**100% Cotton Denim & Twill**

# Women's Denim Short & Skirt



55% Linen  
45 % Cotton  
130 Gsm



100% Viscose  
110 Gsm with  
Searsukar



100% Viscose  
110 Gsm  
Regular

# Women's crop tops & shorts



**Composition: 100% Cotton terry loop Inside**  
**Size Group: S-XXL**

# Women's Tops



**100% Viscose**  
**All over print**



**100% Cotton**  
**All over print**



**100% Viscose**  
**All over print**

# WOMEN'S DENIM JACKET



**OVERSIZED DENIM JACKET**

**Composition:**

✓ 100% cotton



**DENIM JACKET**

**Composition:**

✓ 100% cotton



**DENIM JACKET**

**Composition:**

✓ 100% cotton



# WOMEN'S DENIM JACKET

## WOMEN'S JACKET

- ✓ 98% cotton,
- ✓ 2% Elastane



# WOMEN'S FULL SLEEVE SHIRT



**COTTON BLEND OXFORD SHIRT**

Composition:

✓ 56% cotton 44% polyester



**STRIPED POPLIN SHIRT**

Composition:

✓ 100% cotton



**FORMAL SHIRT**

Composition:

✓ 100% cotton



# Women's Trousers



**STRAIGHT FIT TROUSERS WITH BUTTONS**

Composition:

✓ 73% polyester 20% viscose 7% elastane



**HIGH-RISE FLARED TROUSERS**

Composition:

✓ 100% polyester



**FLARE TROUSERS**

Composition:

✓ 71% polyester 23% viscose 6% elastane

# Women's T-Shirt



**Composition: 100% Cotton**  
**Inside Loop Terry**  
**Decor: Garment Dye**  
**Size Group: XS-XL**



**Composition: 100% Cotton**  
**Single Jersey**  
**Decor: Semi Rubber Print**  
**Size Group: XS-XL**

# Women's T-Shirt



Composition: 100% Cotton Single Jersey  
Decor: Semi Rubber Print & Chippon  
Embroidery  
Size Group: XS-XL

# Women's T-Shirt



**Composition: 100% Cotton**  
**Single Jersey**  
**Size Group: XS-XL**



# Women's T-Shirt



**Description :** Ladies T-Shirt  
**Fabrication :** Single Jersey  
**Composition :** 95% Cotton,5%  
Elastane  
**Size Group:** XS-XL



**Description :** Ladies T-Shirt  
**Fabrication :** Single Jersey  
**Composition :** 100% Cotton  
**Size Group:** XS-XL

# Women's T-Shirt



**Composition: 95%  
Cotton 5% Elastane**  
**Single Jersey**  
**Decor: Embroidery,  
Sequins & Stone**  
**Size Group: XS-XL**

# Women's Vest



**Composition: 95% Cotton 5% Elastane Single Jersey**  
**Decor: All Over Print**  
**Size Group: XS-XL**

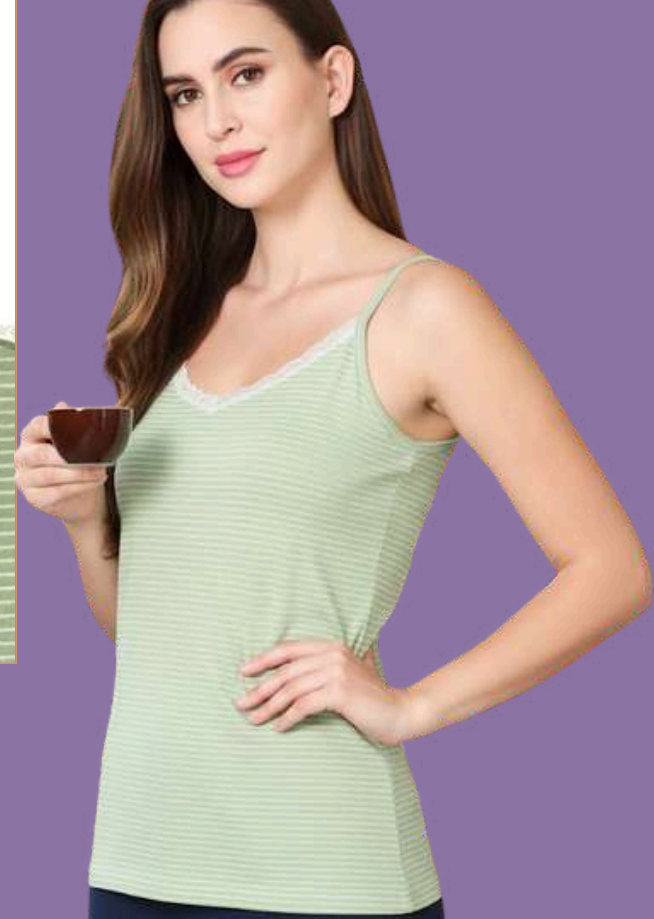


**Composition: 95% Cotton 5% Elastane Single Jersey**  
**Size Group: XS-XL**



**Composition: 95% Cotton 5% Elastane Yarn Dyed Single Jersey Decor: Semi Rubber Print**  
**Size Group: XS-XL**

# Women Vest



**Composition: 95% Cotton  
5% Elastane Single Jersey  
Decor: Lace  
Size Group: XS-XL**

# Women Vest



**Composition: 100% Cotton**  
**Single Jersey**  
**Decor: Lace**  
**Size Group: XS-XL**

# Women Vest



**Composition: 95% Cotton 5% Elastane Single Jersey Decor:**  
**Rubber Print**  
**Size Group: XS-XL**



**Composition: 95% Cotton 5% Elastane Single Jersey**  
**Size Group: XS-XL**



**Composition: 95% Cotton 5% Elastane Single Jersey**  
**Size Group: XS-XL**



**Composition: 95% Cotton 5% Elastane Single Jersey**  
**Decor: Lace**  
**Size Group: XS-XL**

# Women Vest



Composition: 94% Polyester  
6% Elastane 2X1 Rib  
Size Group: XS-XL

# Women's Crop Tops



**Composition: 100% Cotton**  
**Single Jersey**  
**Decor: Semi Rubber Print**  
**Size Group: XS-XL**



**Composition: 95% Cotton 5%  
elasten**  
**Single Jersey**  
**Size Group: XS-XL**



**Composition: 50% Cotton**  
**50% Modal 1X1 Rib**  
**Decor: Water Print**  
**Size Group: XS-XL**



**Composition: 100% Cotton 2X1 Rib**  
**Decor: Semi Rubber Print**  
**Size Group: XS-XL**

# Women's Crop Tops



**Composition: 100% Cotton 2X1 Rib**  
**Decor: Embroidery & Garments Dye**  
**Size Group: XS-XL**

# Women Tanktop



**Composition: 100% Cotton**  
**2X1 Rib**  
**Size Group: XS-XL**



**Colour Available**

# Women's Collection

## Women Tanktop



**Composition: 94% Polyester  
6% Elastane 2X1 Rib  
Size Group: XS-XL**

## Women Vest



# Women's Dress



**Composition: 100% Cotton**  
**1X1 Rib**  
**Decor: Garments Dye**  
**(Acid Wash)**  
**Size Group: XS-XL**



**Composition: 95% Cotton 5%**  
**Elastane 2X1 Rib**  
**Decor: Bra Padding In Chest**  
**Size Group: XS-XL**

# Womens premium night dress



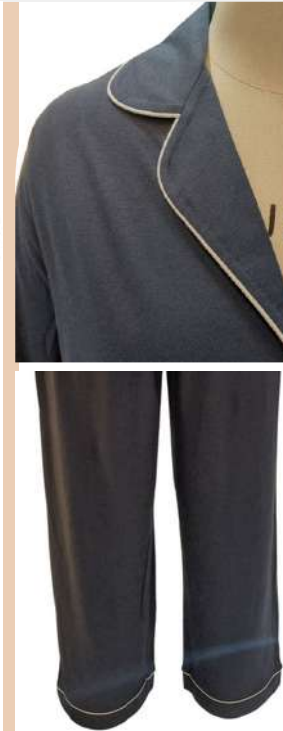
**Composition: 100% Cotton Single Jersey All Over Print**  
**Size Group: S-XXL**



**Composition: 92% Polyester 8% Elastane Yummy Jersey All Over Print**  
**Size Group: S-XXL**



**Composition: 100% Cotton Single Jersey All Over Print**  
**Size Group: S-XXL**



**Composition: 50% Cotton 50% Modal Single Jersey**  
**Size Group: S-XXL**

# Women's Nightdress



26V

26V



26V-0106J-04

26V-0107J-04

26V-0108J-04

**Composition: 100% Cotton Single Jersey**  
**All Over Print**  
**Size Group: S-XXL**  
**3XL-5XL**

# Women's Nightdress



**Composition: 100%  
Cotton Single Jersey  
All Over Print  
Size Group: S-XXL  
3XL-5XL**

# *Women's Nightdress*



**Composition: 100%  
Cotton Single  
Jersey  
Size Group: S-XXL  
3XL-5XL**

# Women Lingerie's



**Composition: 95% Cotton  
5% Elastane Single Jersey  
Decor: Padding & Lace  
Size Group: 85-105**

# Women Lingerie's



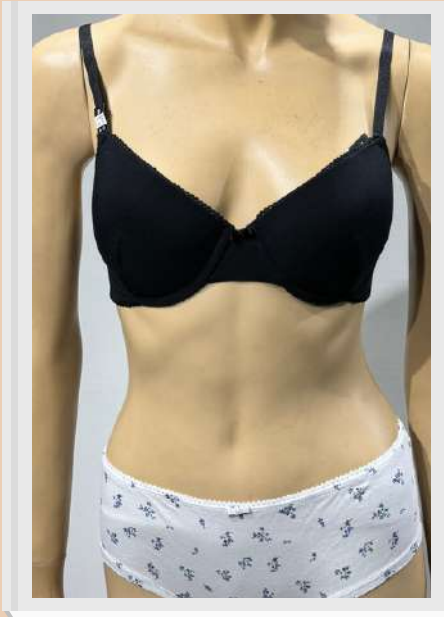
**Composition: 95%  
Cotton 5% Elastane**  
**Single Jersey**  
**Decor: Lace & Bow**  
**Size Group: XS-3XL**

# Women Lingerie's



**Composition: 95% Cotton  
5% Elastane Single Jersey  
Decor: Lace & Bow  
Size Group: XS-3XL**

# Women Lingerie's



**Composition: 95% Cotton 5% Elastane Single Jersey**  
**Decor: Lace, Padding & All Over Print.**  
**Size Group: XS-3XL**

**Composition: 95% Cotton 5% Elastane Single Jersey**  
**Decor: Lace, Padding & All Over Print.**  
**Size Group: XS-3XL**

# Women's Fitness Wear



**Composition: 92% Polyester 8%  
Elastane Single Jersey  
Decor: Logo on Front  
Size Group: XS-2XL**

# Women's Fitness Wear



**Composition: 92% Polyester  
8% Elastane Single Jersey  
Decor: Logo on Front  
Size Group: XS-2XL**

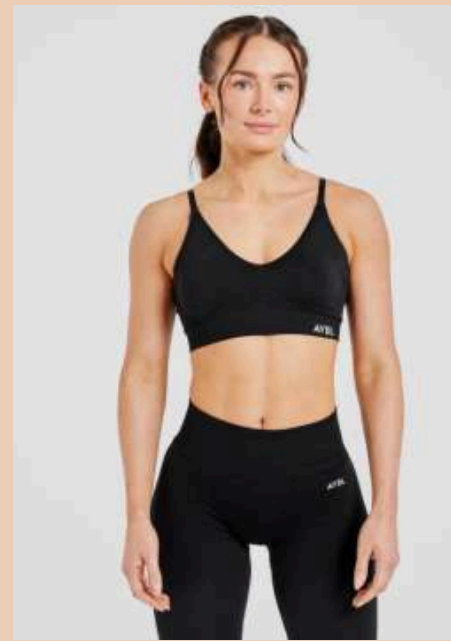
# Women's Fitness Wear Seamless



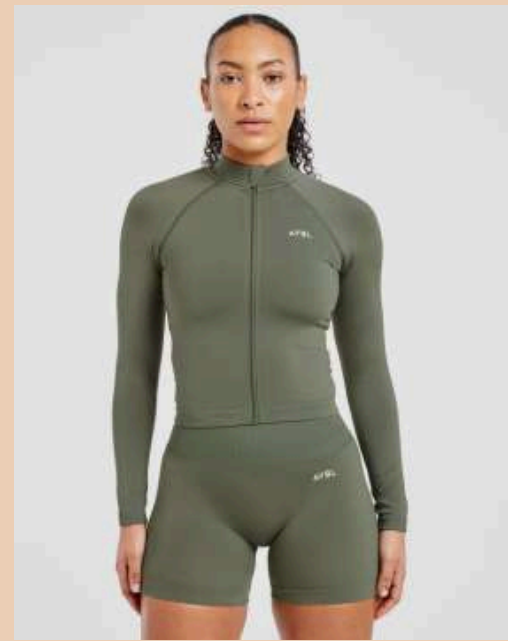
49% Polyester, 42% Nylon, 9% Elastane Flattering crop top fit with short sleeves Curved waistband shaping at side seam Open back detailing AYBL logo to back waistband



49% Polyester, 42% Nylon, 9% Elastane Flattering hip length fit and long sleeves Subtle contouring flatters the waist High neck shaping Secure lock front zip closure AYBL logo to front chest



49% Polyester, 42% Nylon, 9% Elastane Medium support (dependant on bra strap styling) Multi-wear strap detailing Flattering v neck and under bust shaping Removable padding AYBL logo to front waistband



49% Polyester, 42% Nylon, 9% Elastane Flattering hip length fit and long sleeves Subtle contouring flatters the waist High neck shaping Secure lock front zip closure AYBL logo to front chest

# Women's Fitness Wear Seamless



66% polyester, 29% nylon, 5% elastane Shell:  
66% polyester, 29% nylon, 5% elastane Mesh:  
66% polyester, 29% nylon, 5% elastane Rib:  
66% polyester, 29% nylon, 5% elastane



Women Knitted Seamless Sleeve  
Length: Short Sleeve Neck: Crew Neck  
Logo: No. 1 Logo Rubber Print



Seamless Elasticated waist PUMA Cat  
logo on left leg

# Ladies Sweater



# Ladies Sweater



70% Acrylic 20%  
Cotton 10%, Nylon - 7 gg



100% Cotton +  
Lurex- Multi gg



100% Acrylic Tube-  
Multi gg



100% Cotton -  
multi gg



100% Cotton + Lurex  
- Multi gg



100% Cotton -  
multi gg



70% Viscose  
30% Nylon



100% Cotton -  
7 gg



# Ladies Sweater



4style: ITM400KW014892 ( QV-4 / ALDI )  
Yarn: 50/50 % ACRY/CTN, 2/20, 3 PLY  
Gauge: 7 GG  
Sample Weight: 8.85 LBS (M)



Style: LTM400KW014982 ( QV-1 /ALDI )  
Yarn: 50/30/20 % VIS/POLY/NY, , 2/48 NM, 3 PLY  
Gauge: 7 GG  
Sample Weight: 13.40 LBS (M)



Style: CROCHET BUTTON CARDIGAN ( ALDI )  
Yarn: 60/40 % CTN/ACRY, 2/16, 3 PLY  
Gauge: 7 GG  
Sample Weight: 12.30 LBS (M)



Style: LTM400KW014524 ( QV-2/ALDI )  
Yarn: 50/50 % CTN/ACRY, 2/32, 4 PLY  
Gauge: 7 GG  
Sample Weight: 11.50 LBS (M)  
FOB \$



Style: LTM400KW014548 ( QV-2 /ALDI )  
Yarn: 72/28 % VIS/POLY, 2/50 ( MACY-REF-857 ) + NY-70D/1  
Gauge: 12 GG  
Sample Weight: 6.85 LBS (M)



# Ladies Sweater



Style: L-CIRCLE CARDIGAN ( OPT-2 /ALDI )  
Yarn: 50/28/22 % VIS/POLY/NY, 2/48 NM  
1 PLY, & 100 % NY FEATHER , 1/13NM  
1 PLY  
Gauge: 12 GG



Style: L-OVERSIZ CARDIGAN  
( STYLE -3 /ALDI )  
Yarn: 100 % RE-POLY CHENILLE  
¾.2 NM, 1 PLY ( INCHON )  
Gauge: 5 GG  
Sample Weight: 16.40 LBS (M)



Style : 15306911 ( ONLY )  
Yarn: 60/40 % BCI CTN/ ACRY, 2/16  
( EVERWAY )  
Gauge: 7 GG  
Sample Weight: 13.25 LBS (M)



4tyle: ONLEMMA LS LIFE BOAT NECK ( ONLY )  
Yarn: 50/20/20/10 % RE-POLY/ POLY/ACRY/NY,  
1/3.8 NM , 1 PLY ( INCHON )  
Gauge: 5 GG  
Sample Weight: 8.25 LBS (M)

# Ladies Sweater



# Ladies Sweater



**STYLE: DGALRAS**  
**Item: Ladies Cardigan**  
**Fabric quality: 100% Cotton**  
**345 grm**  
**Measurement: M size**  
**Length: 51 CM**  
**½ Chest: 49 CM**  
**Sleeve length: 58.5 CM**  
**Neck Opening: 13.5 CM**



**STYLE: DMARMITAKOS**  
**Item: Ladies Sweater**  
**Fabric quality: 100% Cotton**  
**330 grm**  
**Measurement: M size**  
**Length: 52 CM**  
**½ Chest: 60 CM**  
**Sleeve length: 41.5 CM**  
**Neck Opening: 15.5 CM**



**STYLE: DLOROS**  
**Item: Ladies Sweater**  
**Fabric quality: 70% Viscose**  
**30% Nylon 280 grm**  
**Measurement: M size**  
**Length: 58 CM**  
**½ Chest: 41.5 CM**  
**Sleeve length: 60 CM**  
**Neck Opening: 15.5 CM**

# Ladies Sweater (Bottom)



100% Cotton – 7 gg



100% Cotton – 7 gg



Yarn: 50% Viscose 28% Poly  
22% Nylon 2/48 NM  
Style: Bisous Pant  
Gauge: 12, Ply: 2 PLY



Fabric quality: PBT YARN, 590gm  
( At 18 CM from waist band)  
-½ Hem : 31.5 CM

# Hat's



**100% Cotton**



**80% Cotton 20% Nylon**



**60% Cotton 40% Viscose**



**100% Acrylic**



**100% Acrylic**



**60% Cotton 40% Nylon**

# Socks



COMPOSITION: 56% COTTON, 42% NYLON & 2% ELASTANE

COMPOSITION: 74% COTTON, 24% NYLON & 2% ELASTANE

COMPOSITION: 64% COTTON, 34% NYLON & 2% ELASTANE



COMPOSITION: 75% COTTON, 23% POLYAMIDE, 1% ELASTANE

COMPOSITION: 78% COTTON, 20% NYLON & 2% ELASTANE

COMPOSITION: 74% COTTON, 24% NYLON & 2% ELASTANE



COMPOSITION: 80% COTTON, 19% NYLON & 1% ELASTANE



COMPOSITION: 74% COTTON, 24% NYLON & 2% ELASTANE



# Tights



50CM-92CM (NB-24M)



COMPOSITION: 78% COTTON,  
20% NYLON & 2% ELASTANE

78% Cotton, 20% Polyamide, 2% Elastane.

92CM-140CM



78% Cotton, 20% Polyamide,  
2% Elastane.

BABY TIGHTS (NB-24M)



78% Cotton, 20% Polyamide, 2% Elastane.



78% Cotton, 20% Polyamide, 2% Elastane.



# GIRLS COLLECTION

# Girls T-Shirt



**Composition: 95% Cotton 5% Elastane**  
**Single Jersey**  
**Decor: Sequins, Rubber & Photo Print**  
**Size Group: 2-14Y**

# Girls T-Shirt



**Composition: 100%  
Cotton Single Jersey  
Decor: Sequins, Rubber &  
Foil Print  
Size Group: 2-14Y**

# Girls T-shirt



Composition: 60% Cotton 40% Polyester Single Jersey Neon  
Decor: Sequins & Rubber Print  
Size Group: 7-14Y

# Girls T-Shirt



Composition: 100% Cotton  
Single Jersey  
Decor: Glitter, Stone & Rubber  
Print  
Size Group: 7-14Y



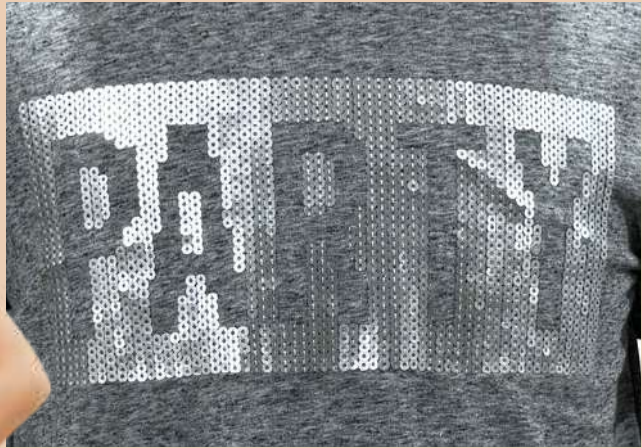
# Girls Tops



**Composition: 100% Cotton**  
**Inside Looped Terry**  
**Decor: Sequins**  
**Size Group: 7-14Y**



# Girls T-Shirt



Sequence Emboydary



Foil Print

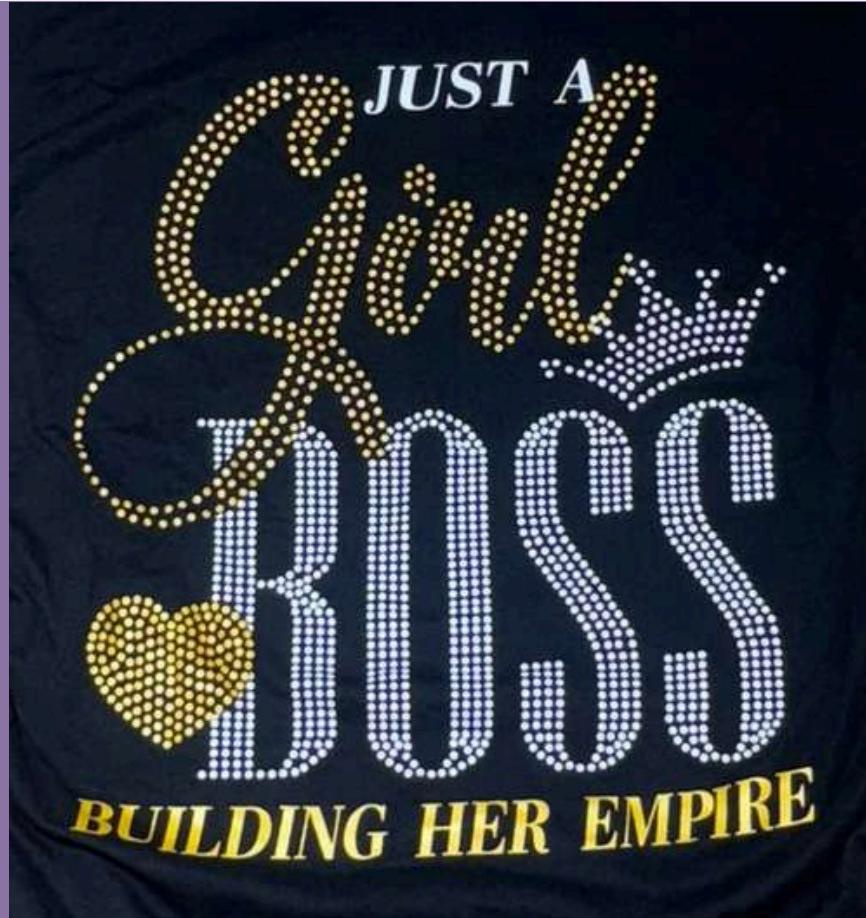
Composition: 100% Cotton  
Nappy Melange Single Jersey  
Decor: Sequins & Foil Print  
Size Group: 7-14Y



Composition: 100% Cotton  
Single Jersey  
Decor: Water & Glitter Print  
Size Group: 7-14Y



# Girls Tops



Composition: 100% Cotton  
Single Jersey  
Decor: Rubber Print  
Size Group: 7-14Y

# Girls Dress



**Composition: 100% Cotton**  
**Double Lacoste**  
**Decor: Photo Sticker**  
**Size Group: 7-14 Y**



**Composition: 92% Polyester  
8% Spandex Craft Fabric**  
**Decor: All Over Print**  
**Size Group: 7-14Y**



**Composition: 95% Cotton 5% Elastane**  
**Single Jersey**  
**Decor: Fake Foil Print**  
**Size Group: 7-14 Y**



**Composition: 100% Cotton**  
**Single Jersey AOP**  
**Size Group: 7-14 Y**

# Girls Dress



**Composition: 100% Cotton Single Jersey**  
**Decor: Rubber Print**  
**Size: 2-14Y**



**Composition: 100% Cotton Single Jersey**  
**Decor: All Over Print**  
**Size Group: 2-14Y**



**Composition: 100% Cotton 2X1 Rib**  
**Decor: Lace**  
**Size: 2-14Y**



**Composition: 60% Cotton 40% Polyester Neon**  
**Decor: Rubber Print**  
**Size: 2-14Y**

# Girls Dress



95/5 Cotton Elastane, 4x3 Rib, (Ref-858373) Group: 74/80 – 92/98 (Infant)



95/5 Cotton Elastane, 4x3 Rib, (Ref- 858800) Group: 134/140 – 158/164 (Junior)



100% Cotton, S/J, (Ref-854683) Group: 98 – 128 (Children)

# Girls Collection



**Composition: 100% Cotton Poplin**  
**Size Group: 7-14Y**



# Girls T-Shirt



**Composition:** 95% Cotton 5%  
Elastane Single Jersey  
**Decor:** Sequins  
**Size Group:** 7-14Y



# Girls Dress



GIRLS TOP AOP  
100% Cotton Chambray  
170 GSM



GIRLS TOP  
100% Cotton Denim  
320 GSM

# Girls Over All

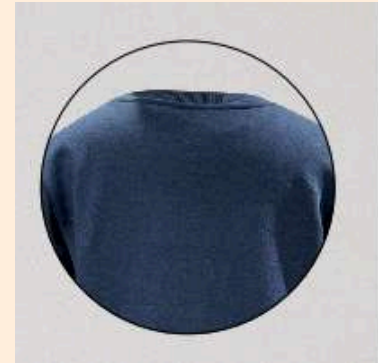


# Girls Sweatshirt



60% Cotton 40% Polyester Inside Looped  
Decor: Sequins, Hologram Sticker, High  
Density Print & Mesh  
Size Group: 7-14Y

# Girls Sweatshirt



**Composition: 60% Cotton 40% Polyester Inside Brush**  
**Decor: Rubber & Glitter Print**  
**Size Group: 7-14Y**

# Girls Sweatshirt & Pant Set



Composition: 60% Cotton  
40% Polyester Inside Brush  
Decor: Rubber , Puff, All Over Print  
Size Group: 2-14Y

# Girls Sweatshirt & Pant Set



Composition: 60% Cotton  
40% Polyester Inside Brush  
Decor: Rubber & Puff Print  
Size Group: 7-14Y

# GIRL'S TANK TOP



**Composition: 100% Cotton Pointal Rib**  
**Decor::Lace**  
**Size Group: 2-14Y**



**Composition: 100% Cotton 2X1 Rib Yarn Dyed**  
**Decor: Embroidery & Lace**  
**Size Group: 2-14Y**



**Composition: 100% Cotton Single Jersey**  
**Decor: Rubber Print**  
**Size Group: 2-14Y**



100% Cotton Single  
Jersey With Rubber Print

# Girl's Denim Short



# Girl's Leggings



**Composition:** 95% Cotton  
5% Elastane Single Jersey  
**Decor:** Semi Rubber Print  
**Size Group:** 7-14Y



**Composition:** 95% Cotton  
5% Elastane Single Jersey  
**Decor:** All Over Print  
**Size Group:** 7-14Y

# Girl's Leggings



**Composition: 95% Cotton 5% Elastane**  
**Single Jersey**  
**Decor: All Over Print**  
**Size Group: 7-14Y**

# Girls Nightwear



**Composition:100% Cotton**  
**1X1 Rib**  
**Decor: All Over Print**  
**Size Group: 7-14Y**



**Composition:100% Cotton**  
**1X1 Rib**  
**Decor: Embroidery & Glitter Print**  
**Size Group: 7-14Y**

# Girls T-Shirt Set



**Composition:**100% Cotton  
**1X1 Rib**  
**Decor:** Rubber & All Over  
**Print**  
**Size Group:** 7-14Y



**Composition:**100%  
**Cotton Single Jersey**  
**Decor:** All Over Print  
**Size Group:** 7-14Y



**Composition:**100% Cotton  
**1X1 Rib**  
**Decor:** Rubber & All Over  
**Print**  
**Size Group:** 7-14Y

# Girls Jumper



Girls Jumper  
100% Cotton – 7 gg



GIRLS TOP  
70% Cotton, 30% Nylon  
7 GG

# Girls Jumper



GIRLS CARDIGAN  
100% Cotton



GIRLS TOP  
100% Cotton  
12 GG

# Girls Jumper

NEW STYLE



GIRLS TOP  
100% FEATHER YARN  
12 GG



CAPTIVATE YOU  
WITH BEAUTIFUL  
WORKS



# Girls Jumper



95% Cotton, 5% Polyester  
12 GG

100% Cotton  
12 GG

# Girls Padding Jacket



GIRLS HOODIE JACKET

100% Nylon

90 GSM

Lining 100% Taffeta-45 GSM



# Girls Padding Jacket



Girls' Suit Jacket



Girls' Suit Jacket



Girls' Light Quilted Jacket  
with Hood

# Girls Jeans



GILRS JEANS  
100% Cotton  
330 GSM

# Girls Jeans



GIRLS JEANS  
78% Cotton,  
20% Polyester,  
2% Spandex  
360 GSM

# MEN'S COLLECTION



# MEN'S FLANNEL SHIRT



MENS LONG SLEEVE SHIRT  
100% Cotton Flannel  
220 GSM

# MEN'S FLANNEL SHIRT



MENS LONG SLEEVE SHIRT  
100% Cotton Flannel  
220 GSM



# MEN'S SHORT SLEEVE T-SHIRT



**Back Side  
Print**

**Composition: 100%  
Cotton Looped Terry  
Decor: Embroidery &  
Water Print  
Size Group: S-XXL**



**Composition: 100% Cotton Single Jersey  
Decor: Water & Semi Rubber Print  
Size Group: S-XXL**



# MEN'S SHORT SLEEVE T-SHIRT



**Composition: 100% Polyester Mesh**  
**Size Group: S-XXL**



**Composition: 100% Cotton Single Jersey**  
**Decor: Garment Dyed**  
**Size Group: S-XXL**



# MEN'S SHORT SLEEVE T-SHIRT



**Composition: 100% Cotton Single  
Jersey Decor: All Over Print  
Size Group: S-3XL**



**Composition: 100% Polyester Mesh  
Decor: Rubber Print  
Size Group: S-3XL**

# MEN'S SHORT SLEEVE T-SHIRT



**PUMATECH Men's Graphic T-Shirt**  
Dry-Cell Technology Shell: 88%  
polyester, 12% elastane Rib: 95%  
polyester, 5% elastane

**Dept. : MEN 70% Cotton 30%**  
Recycle Cotton Single  
Jersey, 140 GSM (AOP).

**Dept. : MEN 100% Cotton**  
Single Jersey

# MEN'S SHORT SLEEVE T-SHIRT



## REGULAR FIT T-SHIRT

Composition:

- ✓ 100% cotton



## STRETCH COTTON OVERSIZED

Composition:

- ✓ 97% cotton
- ✓ 3% elastane



## PRINTED T-SHIRT

Composition:

- ✓ 100% cotton

# MEN'S T-SHIRT SET



**Fabric**



**Composition: 95%  
Cotton 5% Viscose**  
**Design Fabric**  
**Size Group: S-XXL**

# MEN'S SHORT SLEEVE POLO SHIRT



Composition: 100% Cotton Single Lacoste, Decor: Embroidery, Size Group: S-XXL

# MEN'S SHORT SLEEVE POLO SHIRT



**Composition: 100% Cotton**  
**Single Lacoste**  
**Size Group: S-4XL**

# MEN'S SHORT SLEEVE POLO SHIRT



100% COTTON



MEN'S M TAD TECH SEAMLESS  
TRAINING POLO Polyester Activity:  
Training, Gym & Sport Leisure Neck:  
Polo Collar Sleeve : Short Sleeve



100% COTTON PIQUE



100% COTTON PIQUE

# MEN'S LONG SLEEVE POLO SHIRT



100% COTTON PIQUE



100% COTTON  
Single Jersey



100% COTTON  
Single Jersey



Single Jersey,  
Inject Slub  
Composition : 97%  
Cotton,3% Elastane

# MEN'S LONG SLEEVE POLO SHIRT



Fleece, 60% Cotton,40% Polyester Pique

# MEN'S SHORT



**Composition: 100% Cotton**  
**Ottoman Design Fabric**  
**Size Group: S-XXL**



**100% Cotton**



**Composition: 95% Cotton 5%**  
**Viscose Design Fabric**  
**Size Group: S-XXL**

# MAN'S SWEATSHIRT



## Men's Sweatshirt

Composition:

✓ 100% cotton

Price:

Quantity:



## Men's Hugo Grey Sweatshirt

Composition:

✓ 100% cotton

Price:

Quantity:



## MELVILLE FULL ZIP JACKET

Composition:

✓ 100% cotton

Price:

Quantity:

# MAN'S SWEATSHIRT



**100% Cotton  
Waffle Jersey**



**50% Cotton 50%  
polyester fleece inside**



**MEN'S RANGER 24  
JACKET DEEP  
FOREST**



**MEN'S MONARCH  
GILET DEEP FOREST**

# MAN'S HOODY



**90% Cotton, 10% Viscose Fleece**



**MEN'S BALLISTIC FLEECE HOODIE SMOKEY OLIVE WARM, FLEECE HOODIE. 275GSM POLYESTER FLEECE. KANGAROO POCKET. ADJUSTABLE HOOD. QUARTER ZIP FRONT. DROPPED HEM. THUMB LOOPS. ZIPPED SECURITY POCKET. 100% POLYESTER.**



**MEN'S KODIAK FLEECE JACKET IVY GREEN WARM, WINDPROOF, SHOWERPROOF FLEECE JACKET. SOUTHERN STAR 340 PRO BONDED FLEECE. WINDPROOF AND WARM. TWO ZIPPED HAND POCKETS. DROPPED HEM. ADJUSTABLE HEM. 100% POLYESTER.**

# MAN'S HOODY



60% Cotton, 40%  
Polyester Terry



60% Cotton, 40%  
Polyester Terry



60% Cotton, 40%  
Polyester Terry



60% Cotton, 40%  
Polyester Terry

# MAN'S DANIM JACKET



## STRETCH COTTON OVERSIZED

### Composition:

- ✓ 97% cotton
- ✓ 3% elastane



## RIPPED DENIM JACKET

### Composition:

- ✓ 100% cotton
- ✓ 25% RCS-certified recycled cotton
- ✓ 50% OCS certified organically grown cotton



## BOXY FIT DENIM JACKET

### Composition:

- ✓ 100% cotton



## 100% Cotton AW-12 OZ

# MAN'S DANIM JACKET



100% Cotton



100% Cotton



100% Cotton

# MAN'S DANIM PANT



## REGULAR FIT JEANS

### Composition:

- ✓ 100% cotton
- ✓ 25% RCS-certified recycled cotton
- ✓ 50% OCS certified organically grown cotton



## STRAIGHT FIT JEANS

### Composition:

- ✓ 100% cotton



## STRAIGHT FIT JEANS

### Composition:

- OUTER SHELL
- ✓ 100% cotton
- LINING
- ✓ 80% polyester
- ✓ 20% cotton

# MAN'S DANIM PANT



**100% Cotton**

# MAN'S DANIM PANT



**100% COTTON  
AW-12 (OZ)**



**100% COTTON  
AW-14 (OZ)**



**100% COTTON  
CANVAS  
AW- 11OZ RFD**



**100% COTTON  
CANVAS  
AW- 11OZ RFD**



**100% COTTON  
AW-12 OZ**

# MAN'S SWEATER



# MAN'S SWEATER



Fabric Composition:  
50% Acrylic  
50% Re-Acrylic+Polyester  
Fabric Weight: 12.77 Lbs ,  
5GG



# MAN'S SWEATER



**FABRIC COMPOSITION:**  
**50% COTTON 50% ACRYLIC**  
**FABRIC WEIGHT: 11.16 LBS,**  
**12GG**

# MAN'S SWEATER



**FABRIC COMPOSITION: 50% COTTON 50% ACRYLIC 2/32,  
100%POLYESTER 100D/1  
FABRIC WEIGHT: 14.35LBS, 7GG**



**FABRIC COMPOSITION: 45%ACRYLIC 42%POLYESTER 9%NYLON 4%WOOL  
FABRIC WEIGHT: 10.15 LBS, 3GG**

# MAN'S SWEATER



**FABRIC COMPOSITION:** 62%POLYESTER  
22%ACRYLIC 9%NYLON 3%WOOL  
4%SPANDEX  
**FABRIC WEIGHT:** 13.40 LBS, 7GG



**FABRIC COMPOSITION:** 62%POLYESTER 22%  
ACRYLIC 9%NYLON 3%WOOL 4%SPANDEX  
**FABRIC WEIGHT:** 9.20 LBS, 7GG



**FABRIC COMPOSITION:** 78%COTTON  
22%POLYESTER  
**FABRIC WEIGHT:** 10.60 LBS, 7GG



**Fabric Composition:** 80%Cotton  
20%Re-Polyester 2/30  
**Fabric Weight:** 10.60Lbs, 12GG

# MAN'S SWEATER



**Fabric Composition: 39%Acrylic  
38%Cotton 23%Polyester , 2/32,  
100D/1  
Fabric Weight: 13.65Lbs, 7GG**



**Fabric Composition: 50%Cotton  
50%Acrylic, 2/32  
Fabric Weight: 14.90Lbs, 12GG**



**Fabric Composition: 50%Acrylic 50%Re-Acrylic +Polyester  
Fabric Weight: 13.85 lbs , 7GG**

# MAN'S SWEATER



# MAN'S SWEATER



**Fabric Composition: 51%Acrylic 42%  
Re-Polyester 5% Wool 2%Spandex, 1/13  
Fabric Weight: 12.00 Lbs, 7GG**



**Fabric Composition: 85%Acrylic  
15%Wool 2/32, 100% Polyester 100D/1  
Fabric Weight: 13.75 Lbs/7GG**



# MAN'S SWEATER



**Fabric Composition:**  
100% Cotton 2/32  
**Fabric Weight:** 8.50 Lbs,  
12GG



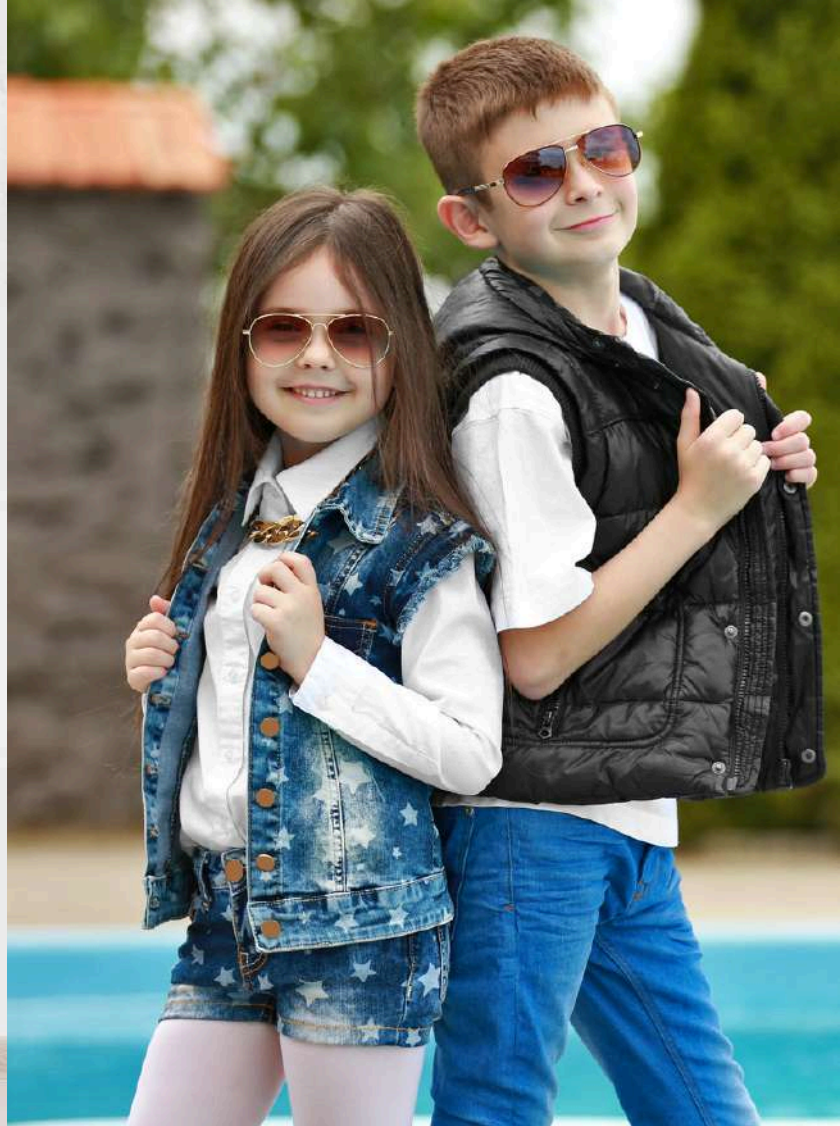
**Fabric Composition:** 78% Cotton  
22% Polyester,  
**Fabric Weight:** 6.15 Lbs, 12GG



**Fabric Composition:** 80% Cotton  
20% Re-Cotton 2/32  
**Fabric Weight:** 8.35 Lbs, 12GG

# KID'S COLLECTION

BOYS & GIRLS



# BOYS SHORT PANT



**100% Cotton Denim**

# BOYS SHORT PANT

SUMMER

*Fashion*

FOR KIDS



# BOYS SHORT PANT



# BOYS SHORT PANT



# BOYS SHORT PANT



# BOYS SHORT PANT



**Composition: 100% Cotton Inside Loop**  
**Decor: Embroidery & Garment Dye**  
**Size Group: 2-14Y**

# BOYS SPORTSWEAR SET



**Composition:**100% Polyester Birds Eye Mesh  
**Decor:** Rubber Print  
**Size Group:** 7-14Y



**Composition:** 100% Polyester Mesh  
**Decor:** Semi Rubber & Foil Print  
**Size Group:** 2-14Y



# BOYS SWEATSHIRT & PANT



**Composition:100% Cotton**  
**Inside Loop Decor: All Over**  
**Print & Semi Rubber Print**  
**Size Group: 7-14Y**

# BOYS SUMMMER SET



**Composition: 100% COTTON**  
**SINGLE JERSEY**  
**Decor: Rubber & All Over**  
**Print.**  
**Size Group:2-14Y**

# BOYS T-SHIRT



**Composition: 100% Cotton**  
**Single Jersey**  
**Decor: Semi Rubber Print**  
**Size Group: 7-14Y**



# BOYS T-SHIRT



**Composition: 100% Cotton Single Jersey**  
**Decor: All Over & Semi Rubber Print, Size Group: 7-14Y**

# BOYS T-SHIRT



**Composition: 100% Cotton Single Jersey**  
**Decor: All Over & Semi Rubber Print**  
**Size Range: 7-14Y**

# BOYS T-SHIRT



Composition: 100% Cotton Single Jersey  
Decor: All Over & Semi Rubber Print Size Group: 7-14Y

# BOY'S T-SHIRT



Composition: 100% Cotton Single Jersey  
Decor: Towel Embroidery, High-Density & All Over Print  
Size Group: 2-6Y

# BOY'S T-SHIRT



Composition: 100% Cotton Single Jersey, Decor: All Over, Rubber & Semi Rubber Print, Size Group: 2-6Y

# BOY'S T-SHIRT



Composition: 100% Cotton Single Jersey, Decor: All Over & Semi Rubber Print, Size Group: 2-14Y

# BOY'S T-SHIRT



Composition:100% Cotton Slub  
Single Jersey  
Size Group: 7-14Y



Composition:100% Cotton Slub  
Single Jersey  
Size Group: 7-14Y



Composition: 95% Cotton 5%  
Viscose Single Jersey  
Size Group: 7-14Y

# BOY'S POLO SHIRT



**Composition:100% Cotton Single Lacoste**

**Decor: Semi Rubber Print**

**Size Group:2-14Y**

# BOY'S POLO SHIRT



**Composition: 100% Cotton Single Jersey**  
**Decor: Applique & All Over Print**  
**Size Group:2-14Y**

# BOY'S LONG SLEEVE POLO SHIRT



**Composition: 100% Cotton Double Jersey**  
**Decor: Semi Rubber Print**  
**Size Group: 3-14Y**



# BOYS SHIRT



# BOY'S SWEETSHIRT



Composition: 60% Cotton 40%

Polyester Inside Loop

Decor: Bag, Embroidery Patch & All

Over Print Stripe

Size Group: 2-14Y



Composition: 100% Cotton

Double Lacoste

Decor: Rubber Print

Size Group: 2-6Y

# BOY'S SWEETSHIRT & PANT SET



Composition: 60% Cotton 40% Polyester Inside Loop  
Decor: All Over Print  
Size Group: 2-6 Y

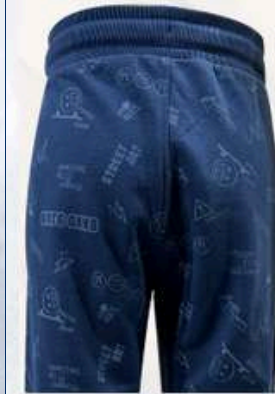
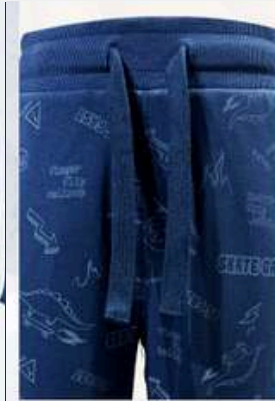


Composition: 60% Cotton 40% Polyester Inside Loop  
Decor: Water Print & Garment Dye (Acid Wash)  
Size Group: 2-6Y

# BOYS SWEETPANT



Composition: 100%  
Cotton Double lacoste  
Decor: Rubber Print  
Size Group: 2-14Y



Composition: 60% Cotton 40%  
Polyester Inside Brush  
Decor: All Over Print:  
Size Group: 2-6Y

# BOYS HOODY



**Composition: 100% Cotton**  
**Terry Loop inside**  
**Decor: All Over Print**  
**Size Group: 2-6Y**



**60% Cotton 40% Polyester Inside Brush**  
**Decor: All Over & Puff Print**  
**Size Group: 7-14Y**

# BOYS HOODY



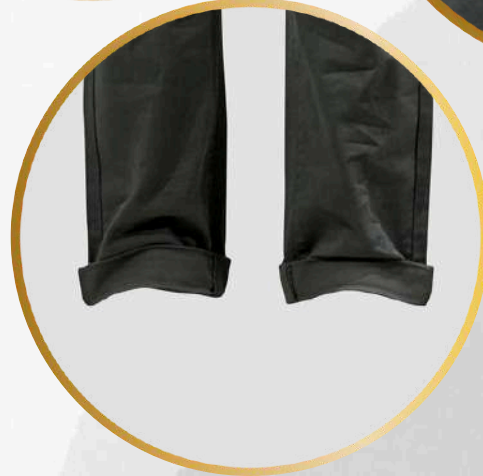
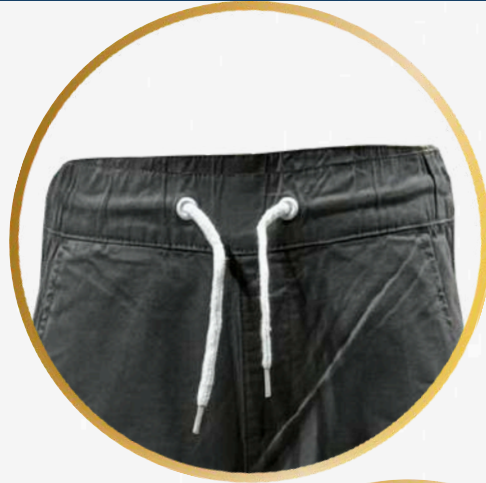
**Composition: 60% Cotton 40% Polyester Inside Loop**  
**Decor: Rubber & All Over Print**  
**Size Group: 7-14Y**



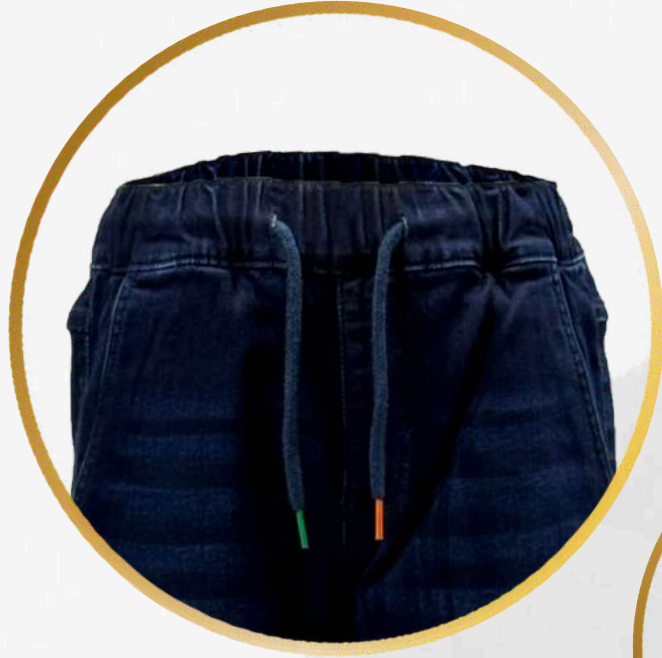
**Composition: 60% Cotton 40% Polyester Inside Brush**  
**Decor: Embroidery**  
**Size Group: 7-14Y**



# BOYS PANT



# BOYS PANT



# BOYS PANT



# BOYS PANT



# BOYS PANT



BOYS TWILL PANT  
100% Cotton- 220 GSM  
Inside Lining 100% Cotton  
Single Jersey



BOYS JOGGERS  
100% Cotton Twill  
250 GSM  
Lining 100% Cotton Single



# BOYS JEANS



BOYS JEANS  
98% Cotton, 2% Spandex Denim  
350 GSM

CATALOGUE  
2026



[www.urbanprobd.com](http://www.urbanprobd.com)  
[riad@urbanprobd.com](mailto:riad@urbanprobd.com)  
[a.cabalga@urbanprobd.com](mailto:a.cabalga@urbanprobd.com)

# SUMMER FASHION



*Women*



*Kids*



*Man*

**NEW**  
COLLECTION

BOYS



**NEW  
ARRIVAL**

ORDER NOW

NEW ARRIVAL

# SUMMER

Fashion



Boys Shorts

79% Cotton 19% Polyester 2%

Spandex Denim, Gsm-11.0 oz

# SUMMER *Fashion* FOR KIDS



BOYS SHORTS  
98% COTTON 2% SPANDEX  
TWILL , GSM-280



BOYS SHORTS  
100% COTTON AOP  
GSM-140





**NEW**  
**ARRIVAL**  
**SHOP NOW**

BOYS SHORTS  
100% Cotton Twill  
GSM-280



[www.urbanprobd.com](http://www.urbanprobd.com)

[riad@urbanprobd.com](mailto:riad@urbanprobd.com),

[a.cabalga@urbanprobd.com](mailto:a.cabalga@urbanprobd.com)



**NEW** **NEW** **NEW** **NEW**  
**NEW** **NEW** **NEW** **NEW**  
**NEW** **NEW** **NEW** **NEW**

**BOYS SHORT PANT**  
100% Cotton Terry  
260 GSM



# KIDS STYLE



BOYS SET  
T -SHIRT : 100% COTTON S/J  
160 GSM  
BOYS SHORT PANT:  
100% COTTON TWILL  
GSM-200



BOYS T-SHIRT  
100% COTTON AOP  
SINGLE JERSEY 160  
GSM





**NEW  
ARRIVAL**

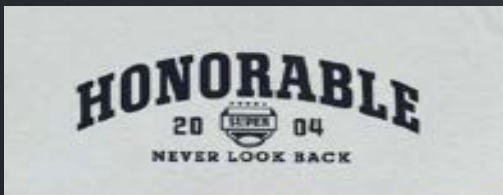
BOYS T-SHIRT  
100% COTTON  
SINGLE JERSEY 160  
GSM





BOYS T-SHIRT  
100% COTTON  
SINGLE JERSEY 160  
GSM

# Summer Collection



MENS T-SHIRT 100%  
COTTON SINGLE JERSEY  
180 GSM





**NEW ARRIVAL**

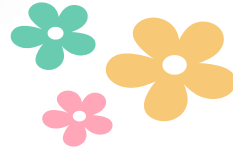
**NEW ARRIVAL**

**NEW ARRIVAL**

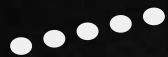
BOYS T-SHIRT  
100% COTTON  
SINGLE JERSEY 160  
GSM



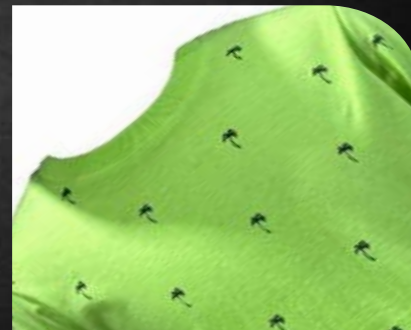
NEW NEW NEW  
NEW NEW NEW



BOYS SUMMER SET  
T-SHIRT :100% COTTON AOP  
SINGLE JERSEY 160 GSM  
SHORT PANT :



# New Arrivals



BOYS T-SHIRT  
100% COTTON AOP  
SINGLE JERSEY 160  
GSM



# ***KIDS STYLE***



BOYS T-SHIRT 100%  
COTTON SINGLE  
JERSEY 160 GSM

NEW ARRIVAL

# For Kids



GIRLS T-SHIRT  
100% COTTON  
SINGLE JERSEY 160  
GSM



# New Fashion

BOYS T-SHIRT 100%  
COTTON SINGLE JERSEY  
160 GSM

# TRENDY



# T-SHIRT



BOYS T-SHIRT 100%  
COTTON SINGLE JERSEY  
160 GSM



BOYS T-SHIRT 100%  
COTTON SINGLE JERSEY  
160 GSM



# KIDS Fashion



BOYS T-SHIRT 100%  
COTTON AOP SINGLE  
JERSEY 160 GSM





# Kids Fashion

BOYS T-SHIRT  
100% COTTON SINGLE  
JERSEY 160 GSM

NEW ARRIVAL

**ROSIN**

*Kids Style*



BOYS T-SHIRT 100%  
COTTON SINGLE JERSEY  
160 GSM

# KIDS FASHION



**NEW**  
COLLECTION

**SHOP NOW**

BOYS T-SHIRT 100%  
COTTON SINGLE  
JERSEY 160 GSM

# KIDS T-SHIRT

---

NEW  
ARRIVAL

ORDER NOW



BOYS T-SHIRT 100%  
COTTON SINGLE JERSEY  
160 GSM



NEW  
NEW  
NEW  
NEW

BOYS T-SHIRT 100%  
COTTON SINGLE  
JERSEY 160 GSM



ZZZZZ



GIRLS T-SHIRT 100%  
COTTON AOP SINGLE  
JERSEY 160 GSM

BOYS T-SHIRT  
100% COTTON  
SINGLE JERSEY 160  
GSM

# KIDS STYLE



**NEW DROP**



**NEW DROP**



**NEW DROP**

# KIDS FASHION



**NEW  
COLLECTION**

**SHOP NOW**

**BOYS T-SHIRT  
100% COTTON SINGLE  
JERSEY 160 GSM**

# Kids T-Shirt

---

BOYS T-SHIRT  
100% COTTON SINGLE  
JERSEY 160 GSM,  
DECO FABRIC: 95 %  
COTTON 5% VISCOSE 160  
GSM

**NEW  
ARRIVAL**

**ORDER NOW**





NEW  
NEW  
NEW  
NEW

NEW ARRIVAL

BOYS T-SHIRT  
100% COTTON AOP  
SINGLE JERSEY 160 GSM

# KIDS Fashion ♡



BOYS POLO SHIRT  
100% COTTON PIQUE  
180 GSM



# TR E N D Y BOYS



# T-SHIRT

BOYS POLO SHIRT  
100% COTTON PIQUE  
180 GSM

# Kids Style

BOYS POLO SHIRT  
100% COTTON PIQUE  
180 GSM



NEW  
NEW  
NEW  
NEW

BOYS POLO SHIRT  
100% COTTON PIQUE 180  
GSM

✦ ✦  
**AVAILABLE**



✦ ✦  
**FASHION**

**FASHION**  
✦ ✦

**NEW DROP**

✦ ✦ **NEW DROP**

✦ ✦ **NEW DROP**

# KIDS Style



GIRLS OVER ALL  
95 % COTTON 5%  
ELASTEN AOP SINGLE  
JERSEY 180 GSM



# SUMMER INSPIRATION



MENS POLO SHIRT  
100% COTTON  
PIQUE 180 GSM

# NEW COLLECTION



MENS POLO SHIRT  
10 0% COTTO N PIQUE 18 0  
GSM

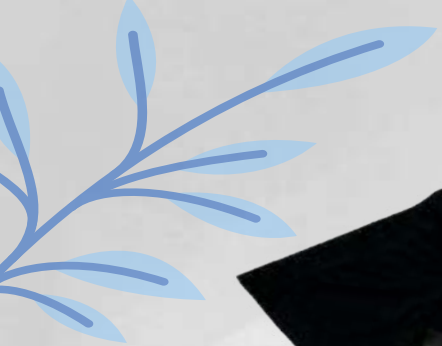
# HELLO SUMMER



# NEW

**SHOP NOW**

MENS T-SHIRT  
100% COTTON AOP  
SINGLE JERSEY 180  
GSM



NEW  
NEW



MENS T SHIRT  
100% POLYESTER  
SINGLE JERSEY 180 GSM

**NEW ARRIVAL**



MENS T- SHIRT  
100% COTTON AOP  
SINGLE JERSEY 150 GSM

NEW

BOYS SET  
95% COTTON 5%  
ELASTEN AOP SINGLE  
JERSEY 160 GSM

KIDS  
STYLE



# KIDS FASHION



# NEW

**SHOP NOW**

GIRLS T-SHIRT  
100% COTTON SINGLE  
JERSEY 160 GSM

# *Kids Fashion*



MENS T - SHIRT  
100% COTTON SINGLE  
JERSEY 150 GSM

# Kids Fashion



BOYS T-SHIRT  
100% COTTON AOP SINGLE  
JERSEY 160 GSM

KIDS STYKE KIDS STYKE

BOYS T-SHIRT  
100% COTTON SINGLE  
JERSEY 160 GSM

# NEW COLLECTION





## KIDS FASHION

BOYS T-SHIRT  
100% COTTON AOP SINGLE  
JERSEY 160 GSM

# New Collection



BOYS T-SHIRT  
95% COTTON 5% VISCOSE  
AOP SINGLE JERSEY  
160 GSM

**NEW  
ARRIVAL**

ROSIN EXPORT



BOYS T-SHIRT  
100% COTTON SINGLE  
JERSEY 150 GSM

[riad@urbanprobd.com](mailto:riad@urbanprobd.com), [a.cabalga@urbanprobd.com](mailto:a.cabalga@urbanprobd.com)



# Kids Fashion



BOYS T-SHIRT  
100% COTTON SINGLE  
JERSEY 160 GSM

# SUMMER COLLECTION



Boys Short Sleeve Shirt  
100% Cotton Printed Poplin,  
GSM-120





# New

## Kids Collection

---



**Order Now**

# SUMMER

# *Fashion*



GIRLS SHORTS  
100% COTTON DENIM  
GSM-7.0 oz



# SUMMER FASHION



GIRLS SKIRT  
79% COTTON 19%  
POLYESTER 2% SPANDEX  
DENIM, GSM-11.0 oz

# SUMMER FASHION

## SUMMER FASHION



GIRLS T-SHIRT  
95% COTTON 5% ELASTEN  
SINGLE JERSEY 160 GSM

SHOP NOW

GIRLS TOPS  
100% COTTON TERRY  
240 GSM



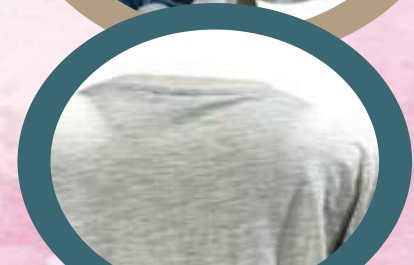
**NEW**



GIRLS T-SHIRT  
95% COTTON 5% VISCOSE  
SINGLE JERSEY 160 GSM



# SUMMER FASHION



MENS T-SHIRT  
100% COTTON SLUB  
SINGLE JERSEY 160 GSM





GIRLS T-SHIRT  
100% COTTON NAPPY MELANGE  
SINGLE JERSEY 160 GSM



# SUMMER INSPIRATION



GIRLS T-SHIRT  
100% COTTON SINGLE  
JERSEY150 GSM



# NEW COLLECTION

GIRLS T-SHIRT  
100% COTTON AOP  
SINGLE JERSEY 160 GSM



*New Collection*  
*New Collection*  
*New Collection*



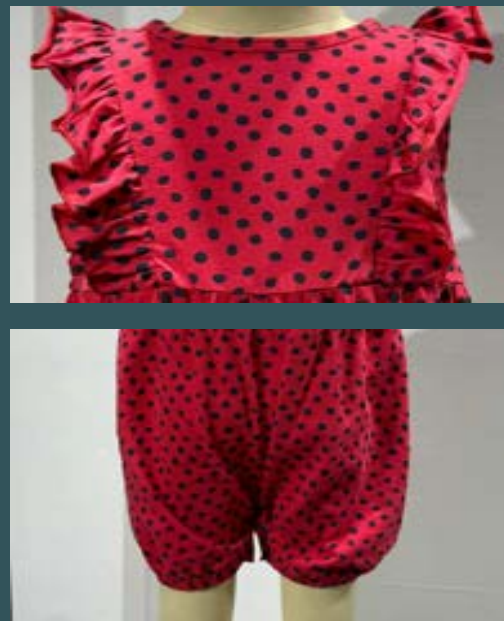
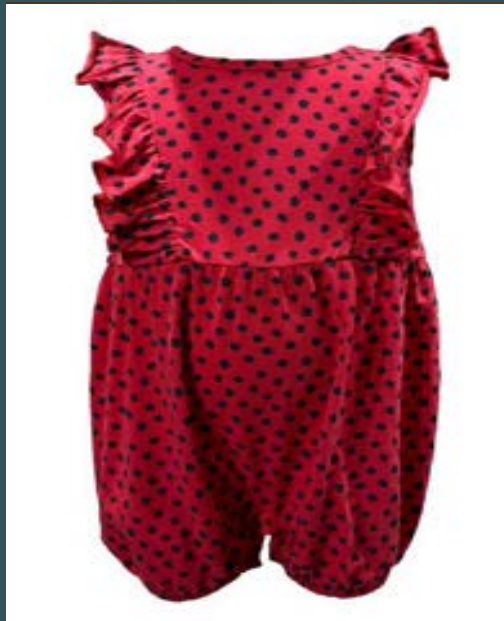
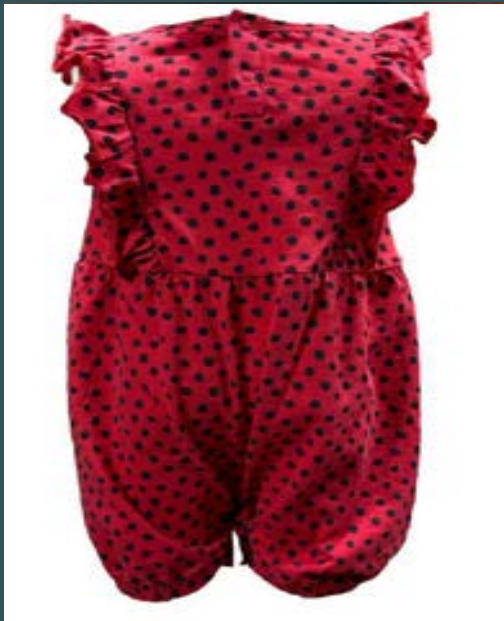
GIRLS T-SHIRT WITH  
LACE  
100% COTTON  
SINGLE JERSEY160  
GSM

NEW ARRIVAL



2026

# GIRLS FASHION FOR BABY



GIRLS OVER ALL : FABRIC 95% COTTON 5% ELASTEN AOP 180 GSM

NEW ARRIVAL



2026

# GIRLS FASHION FOR BABY



GRILS DRESS : 100% COTTON AOP SINGLE JERSEY 160 GSM



# SUMMER INSPIRATION



GRIS SHORT DRESS  
100% COTTON SINGLE  
JERSER 160 GSM

GRILS TOPS  
60% COTTON 40%  
POLYESTER S/J 160 GSM  
NEON COLRO



# SUMMER FASHION

# NEW FASHION FASHION FASHION



GRILS DRESS  
100% COTTON AOP  
SINGLE JERSEY 160 GSM



NEW ARRIVAL  
NEW ARRIVAL  
NEW ARRIVAL  
NEW ARRIVAL

GRILS LONG DRESS  
100% COTTO SINGLE JERSEY  
160 GSM



# SUMMER *Collection*



GRILS LONG DRESS  
100% COTTON Y/D  
SINGLE JERSEY 160 GSM



GRILS LONG DRESS  
60% COTTON 40% POLYESTER  
SINGLE JERSEY 160 GSM

# Summer Collection



# FASHION



Girls Tops  
100% Cotton Poplin  
Gsm-110

# SUMMER FASHION

*New Collection*



Boys Cargo Pant  
98% Cotton 2% Spandex Twill  
Gsm-280



Girls Jeans  
98% Cotton 2% Spandex Denim  
Gsm-10.50 oz

*Summer*

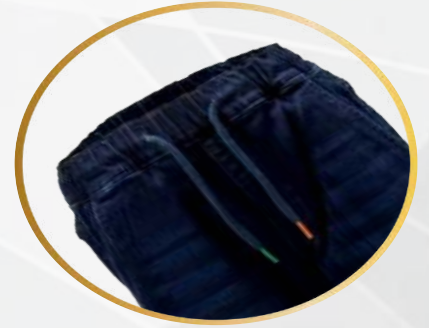
**FASHION**

# BRAND NEW

*Collection*



Boys Jogger  
98% Cotton 2% Spandex  
Gsm-11.0 oz





2026

# NEW COLLECTION.

GIRLS LEGGING  
95% COTTON 5% ELASTEN  
AOP SINGLE JERSEY 180 GSM





2026

# NEW COLLECTION.

Boys Pant

98% Cotton 2% Spandex Twill

Gsm-280





Girls Jogger  
100% Cotton Denim  
Gsm-10.0 oz



# SUMMER FASHION

*New Collection*



GIRLS LEGGING  
95% COTTON 5% ELASTEN AOP  
SINGLE JERSEY 180 GSM

# SUMMER FASHION

*New Collection*



Girls Jeans

98% Cotton 2% Spandex Denim

Gsm-11.0 oz

**NEW PRODUCT**

# KIDS STYLE



Boys Joggers  
75% Cotton 24% Polyester  
1% Spandex Knit Denim  
Gsm-11.0 oz





Boys Jeans  
77% Cotton 22% Polyester  
1% Spandex Denim  
Gsm-9.5 oz

# KIDS STYLE



A woman wearing a black wide-brimmed hat and a black top is holding a vibrant red rose. The background is dark, making the woman and the rose stand out. The text is overlaid on the image.

*Women*

COLLECTION

SUMMER 2026

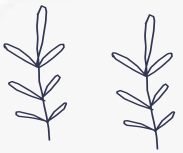
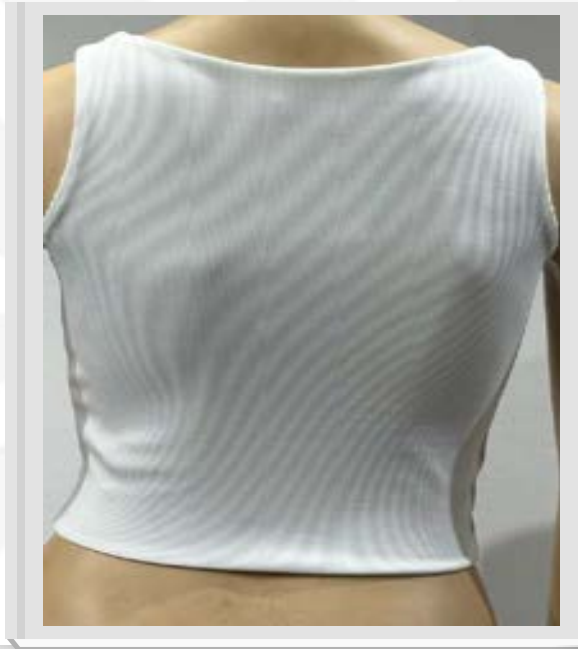
---

[www.urbanprobd.com](http://www.urbanprobd.com)

[riad@urbanprobd.com](mailto:riad@urbanprobd.com),  
[a.cabalga@urbanprobd.com](mailto:a.cabalga@urbanprobd.com)

NEW ARRIVAL

# WOMEN FASHION



**WOMENS TANGTOP**  
95% Polyester, 5% Elastane  
2X1 RIB  
220 GSM





# Womens Tangtop



## WOMENS TANGTOP

95% Polyester, 5% Elastane

2X1 RIB

220 GSM



NEW ARRIVAL



2026

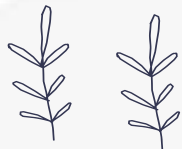
# WOMEN FASHION

LADIES VEST  
95% COTTON 5% ELASTEN  
SINGLE JERSEY 160 GSM





# WOMEN FASHION



## WOMENS UNDER GRAMENTS

95% Polyester, 5% Elastane  
Lining-100% Polyester  
160 GSM



NEW ARRIVAL



2026

# WOMEN FASHION

## WOMENS UNDER GARMENTS

95% Polyester, 5% Elastane

Lining- 100% Polyester

160 GSM





LADIES TOPS  
100% COTTON Y/D  
SINGLE JURSEY 160 GSM



WOMENS TOPS  
95% COTTON 5%  
ELASTEN 180 GSM

# Women Style



NEW ARRIVAL



2026

WOMEN FASHION

SUMMER



LADIES UNDER WEAR  
95% COTTON 5%  
ELASTEN 160 GSM

# SUMMER WOMEN FASHION



LADIES UNDER WEAR  
95% COTTON 5% ELASTEN  
SINGLE JERSEY 160 GSM

# WOMEN FASHION

LADIES UNDER WEAR  
95% COTTON 5% ELASTEN  
AOP SINGLE JERSEY 160 GSM



**NEW  
ARRIVAL**

**NEW  
ARRIVAL**



LADIES UNDER WEAR  
95% COTTON 5% ELASTEN  
AOP SINGLE JERSEY160 GSM

Women  
**STYLE**

Women  
**STYLE**



# WOMEN FASHION



LADIES TPOS  
100% COTTON 2X1 RIB  
220 GSM



**NEW  
ARRIVAL**

# SUMMER FASHIOM



LADIES T-SHRIT  
100% COTTON SINGLE  
JERSEY 160 GSM



GRILS LONG DRESS  
100% COTTON Y/D  
SINGLE JERSEY 160 GSM

SUMMER

FASHION



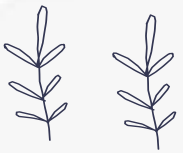
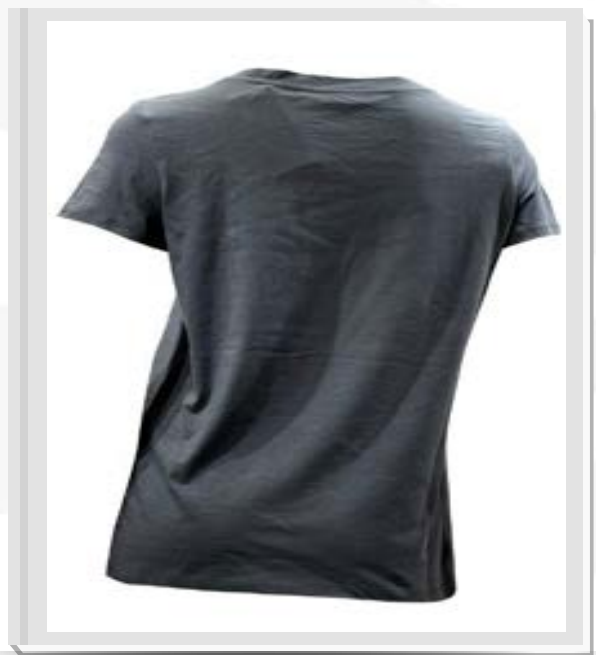
# Womens Fashion

LADIES T-SHRIT  
100% COTTON Y/D SINGLE  
JERSEY 160 GSM



NEW ARRIVAL

# WOMEN FASHION



LADIES T-SHIRT  
100% COTTON SINGLE  
JERSEY 160 GSM

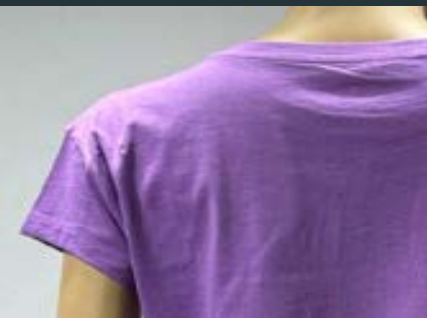


# SUMMER FASHIOM



LADIES T-SHRIT  
100% COTTON SINGLE JERSEY  
160 GSM

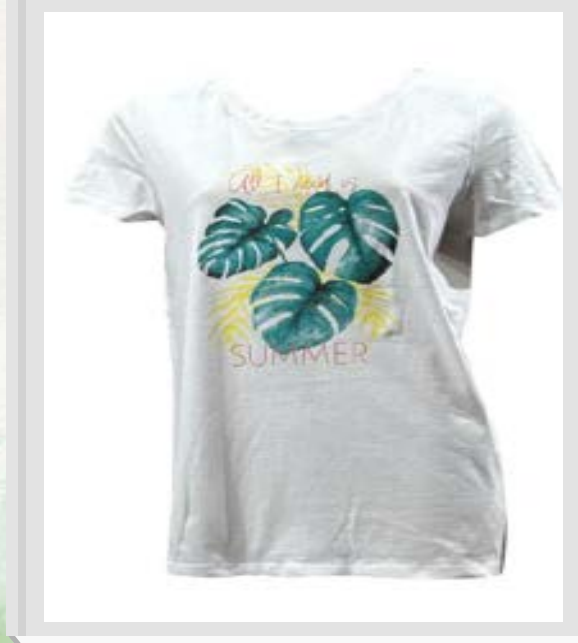




## WOMEN FASHION

LADIES T-SHIRT  
100% COTTON SINGLE  
JERSEY 160 GSM

# Women Fashion

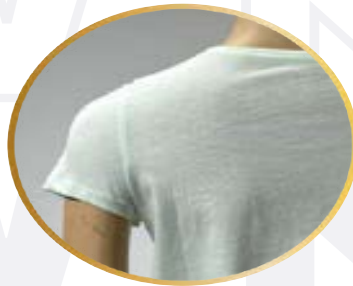
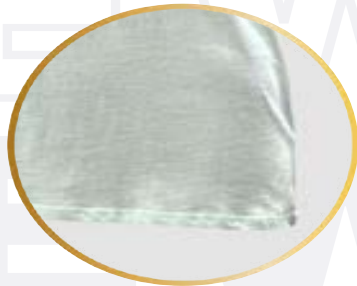


*fashion*

LADIES T-SHRIT  
100% COTTON SINGLE  
JERSEY 160 GSM

# Womens Fashion

LADIES T-SHRIT  
100% COTTON SINGLE  
JERSEY 160 GSM





## Available Colors



**Lacoste Fabric**



nonlBlend



# Mens Polo Shirts

100% Cotton Short Sleeve Activewear



Stylish Side Hem



Pique Fabric



220 GSM



Breathable



Short Sleeve





**3 Button Design**



**Half Sleeve**



**Stylish Side Hem**



**NEW  
ARRIVAL**



## Men's Solid Polo Shirts

100% Cotton Short Sleeve Activewear



**220 GSM**



**Breathable**



**Short Sleeve**





# MENS POLO SHIRT



**Solid Polo Shirts**  
100% Cotton Short Sleeve Activewear

# Men's Polo Shirts

100% Cotton Short Sleeve Activewear



220 GSM



Breathable



Short Sleeve



# Men's Polo Shirts

100% Cotton Short Sleeve Activewear



220 GSM



Breathable



Short Sleeve



# Mens Polo Shirts

100% Cotton Short Sleeve Activewear



3 Button Design



Half Sleeve



Stylish Side Hem



Pique Fabric



## Available Colors



220 GSM



Breathable



Short Sleeve



# Mens Polo Shirts

100% Cotton Short Sleeve Activewear



220 GSM



Breathable



Short Sleeve



# Mans Polo Shirt

100% Cotton  
Short Sleeve Activewear



220 GSM



Breathable



Short Sleeve

## NEW ARRIVAL

ORDER NOW



# Mens Polo Shirts

100% Cotton Short Sleeve Activewear



Stylish Side Hem



Pique Fabric



220 GSM



Breathable



Short Sleeve



# SUSTAINABILITY

**It is much more than an idea at Noman Group. Sustainability is profoundly embedded into our business. We take our role in responsibly shaping the future very seriously by consistently working to improve not only our performance and the quality of our production**

## QUALITY IN FOCUS

ISO 9001 certified

Believe in prevention

In-house testing facilities

Periodic calibration of all inspector and technician

System approach to remove the deviation from source

## PROCESS CONTROL TOOLS USED

Receiving inspection

Zero defect approach

SIPOC

Quality Management System

Failure Mode Effect Analysis

Control plan

CTQ (Critical to quality) control

Measurement System Analysis

COPQ (Cost of Poor Quality) monitoring



# ENVIRONMENTAL SUSTAINABILITY:

Competitive wages

Biological Effluent Treatment Plant (Panta-Rei)

Capacity: 6000 m3/day

Digital control from a central control room

BOD sensor with incubator ( For BOD test)

Spectrophotometer (For COD test)

Thermo reactor (For COD test)

Microscope ( For Bacteria analysis)

Multi-meter (For TDS, pH, DO, Temperature etc)

Precision balanceZero Liquid Discharge by 2020

Zero Liquid Discharge by 2020

Women Empowerment (80% of our garments workforce is female)

Maternity leaves

Day care center for infants

Medical Facility

Life Insurance

Living accommodations for plant workers

Hygienic dining facility for all employees

Timely salary disbursement through ATM cards to all employees

Training Center for human development

HIV Awareness Training

Fair Price Shop

No Child Labor



# LINGERIE ITEMS

MARKET INTELLIGENCE

## Macro Trends

Comfort at every touch point  
 Comfort continues to drive re-emergence in the bra market. Engineered every touch point against the skin. Strap, hook & eye, wired casing provide ultimate comfort.

Key features highlighted: **PIVOT POINT** (Designed to reduce friction), **SOFT TOUCH** (Designed to reduce friction), **ADJUSTABLE STRAP**, **SOFT TOUCH** (Designed to reduce friction), **SOFT TOUCH** (Designed to reduce friction).

The soft touch jersey-lined cup contour fits like a second skin. Built-in bralette for no-itching.

MARKET INTELLIGENCE

## Macro Trends

### Fit Experts 101

To build trust and brand loyalty that meets consumer needs, Lingerie Experts provide a fit guide to help them find the best fit through product and services.

The fit guide for the bra section includes: **UNDERWIRE** (Cushioned Underwire support), **STRAPS** (Pillow Strap for extra comfort), **BACK** (Vanishing back), **UNDERWIRE** (Cushioned Underwire support), **STRAPS** (Pillow Strap for extra comfort), **BACK** (Vanishing back).

**FOR YOUR BODDS.** **STEP 1: THE STRAPS**

**auden.**  
**There's No Body Like You**  
 The fit experts are here to help you. Enhance fit.

MARKET INTELLIGENCE

## Key item: Lingerie

### The T-shirt Bra

Lighter breathable pad  
 Cushioned Underwire support  
 The basic padded T-shirt bra for everyday comfort and a smooth look under clothes remains key.

Key features highlighted: **Pillow Strap** for extra comfort, **Vanishing back**, **Lighter breathable pad**, **Cushioned Underwire support**.

MARKET INTELLIGENCE

## Key item: Lingerie

### The Unlined

Stretch fabrics become more important due to active inspired and minimalist trends such as body-wear, as well as more consumers seeking comfortable designs with neutral shading.

MARKET INTELLIGENCE

## Key item: Lingerie

### New Sexy - Sheer Minimalism

Clean-edge aesthetics design with delicate sheer cup

MARKET INTELLIGENCE

## Key item: Lingerie

### Smoothing Zone

Seamless bralette  
 Seamless bralette

# ACTIVE WEAR

## REMOVABLE PADDING



OPTION 1  
1. FRONT  
2. BACK

OPTION 2



OPTION 1  
1. FRONT  
2. BACK

OPTION 2



OPTION 1  
1. FRONT  
2. BACK

OPTION 2

STYLE



STYLE



002-TF-00010  
1. HIGH RISE, FULL LENGTH  
2. BICYCLE SHORTS  
3. SHEET PRINT



002-TF-00013  
1. HIGH RISE, FULL LENGTH  
2. BICYCLE SHORTS  
3. SHEET PRINT



13



002-TF-00015  
1. HIGH RISE, FULL LENGTH  
2. BICYCLE SHORTS  
3. SHEET PRINT



15

STYLE



002-TF-00019

002-TF-00020

002-TF-00021

# HOME TEXTILE ITEMS

BATH  
TOWEL



INDUSTRIAL  
TOWEL



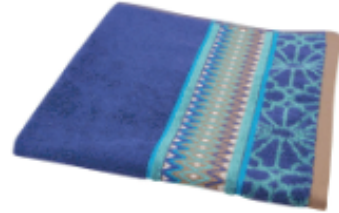
BEACH  
TOWEL



HAND  
TOWEL



WASH CLOTH



KITCHEN  
TOWEL



BATH  
SHEET



BI  
B



BATH  
MATT



BED  
SHEET



TOWEL

